



7-9 Marsh Street Earlville QLD

13 🏠 7 🚗 10 🚗

Welcome to 7-9 Marsh Street! Rarely does an opportunity of this scale hit the Earlville market. Whether you're a savvy investor looking for a high-yield "set and forget" addition to your portfolio, or a large family seeking a multi-generational lifestyle with passive income, this massive dual-occupancy site delivers.

Set on a generous 1528sqm block of land, this unique property features two distinct dwellings, a large family home situated at the front of the block and a solid complex of four, two-bedroom units privately positioned at the rear.

Family Home (Front of Block):

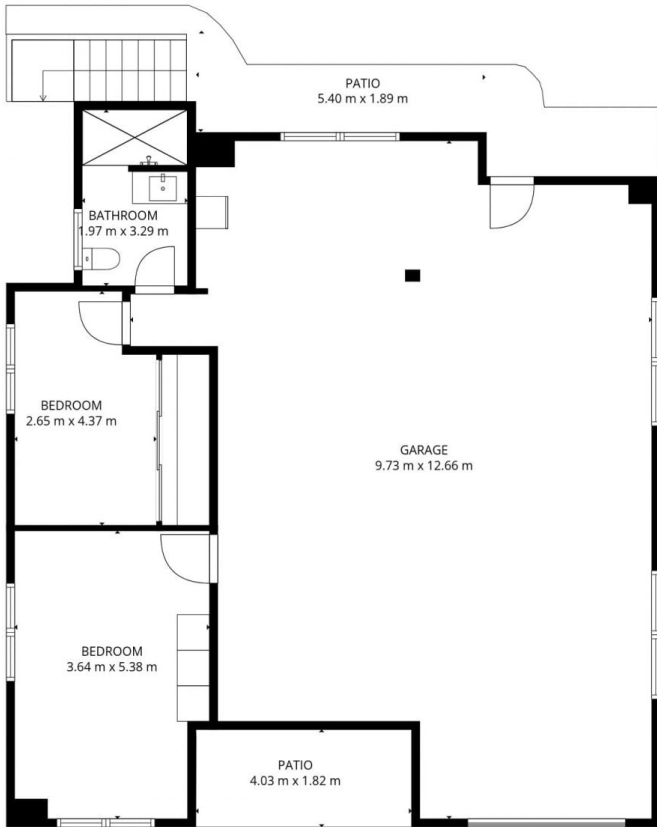
The spacious family home boasts 5 generous bedrooms, 3 bathrooms and is perfect for extended families seeking

Type : Block of Units
Price : Expressions of Interest Over \$2.2 Million
Land Size : 1528 sqm
View : <https://www.purpleoak.com.au/8674369>

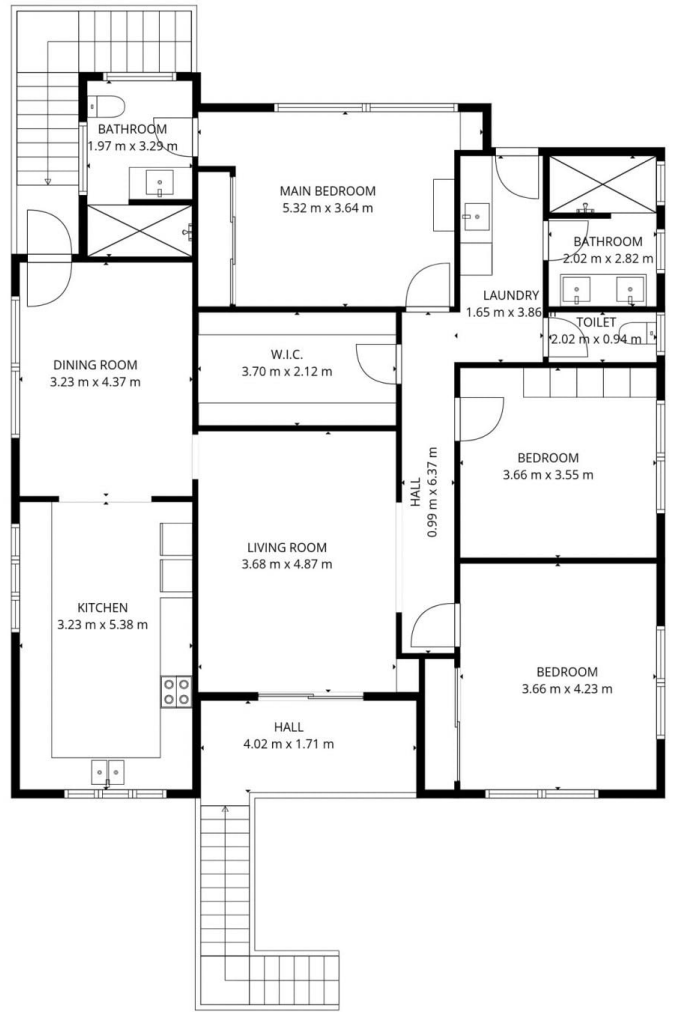


Joanne Roberts
07 4054 3563

[For full version visit the website](https://www.purpleoak.com.au)



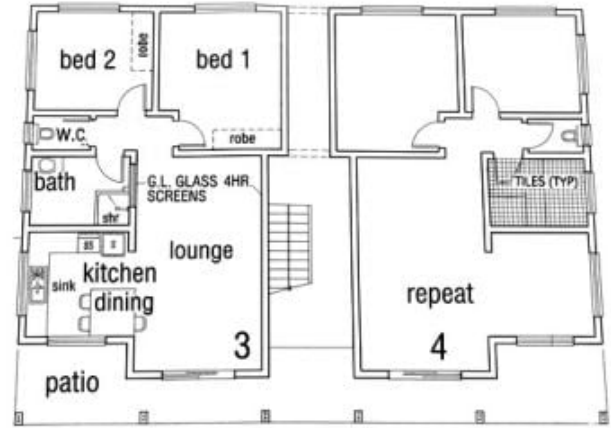
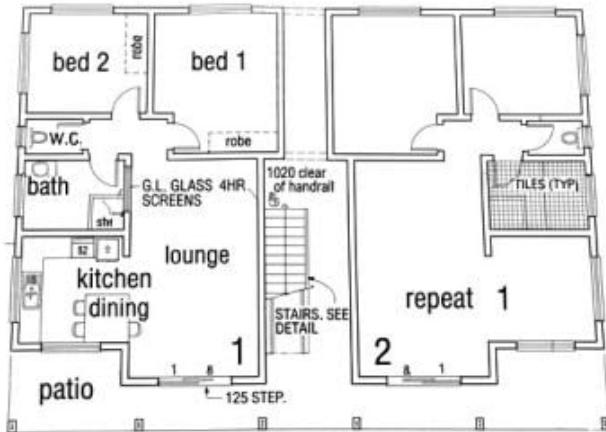
1st floor



2nd floor

Floorplan is for illustrative purposes only and is not to scale.
 Every attempt has been made to ensure the accuracy of the floorplan shown, however all measurements, fixtures, fittings and data shown are an approximate interpretation for illustrative purposes only.
 Liability for errors, omissions or mis-statement through negligence or otherwise is hereby excluded.

7-9 Marsh Street, Earlville



Unit Block
7 – 9 Marsh Street, Earlville

Floorplan is for illustrative purposes only and is not to scale.
 Every attempt has been made to ensure accuracy of the floorplan shown, however all measurements, fixtures, fittings and data shown are an approximate interpretation for illustrative purposes only.
 Liability for errors, omissions or mis-statement through negligence or otherwise is hereby excluded.