



### 7 Surtees Close Bentley Park QLD

4  2  3 

Situated in a fantastic close of Bentley Park sits this four bedroom family home. From the separate living areas to the expansive outdoor space and side access, this home offers comfortable living for everyone!

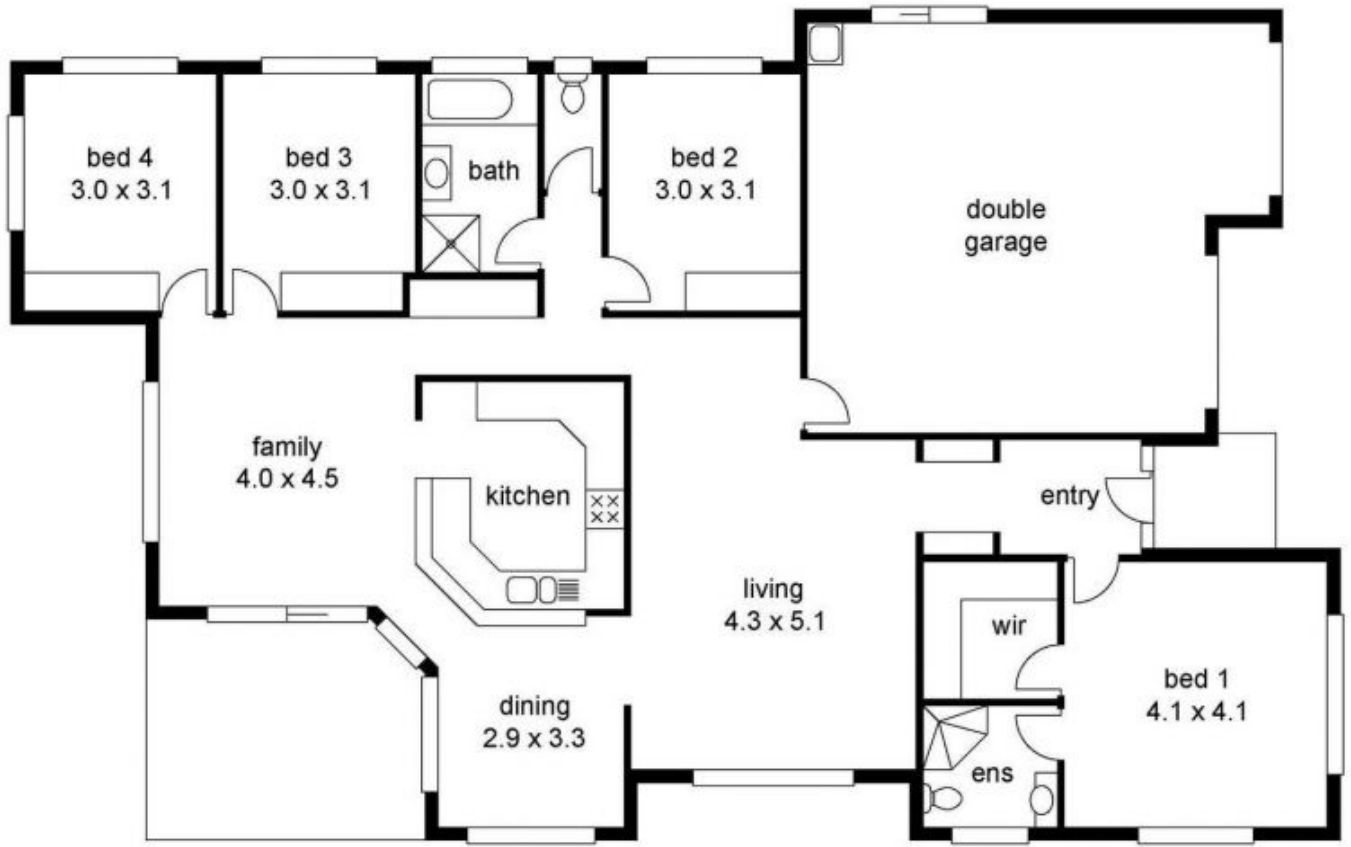
**Price** : \$ 530,000  
**Land Size** : 600 sqm  
**View** : <https://www.purpleoak.com.au/sale/qld/cairn-s-district/bentley-park/residential/house/7580849>

#### Property Features:

- Four bedrooms with the master generous in size and comprising of walk-in robe and ensuite. The three other bedrooms all comprise of built-in robes.
- Multiple living areas including lounge, family and dining spaces.
- Spacious kitchen with an abundance of bench-top and cupboard space, pantry and dishwasher.
- Generous family bathroom with separate shower and full bath-tub.
- Air-conditioned throughout.
- Expansive outdoor space which overlooks the backyard.



**Joanne Roberts**  
07 4054 3563



UPRN:  
**2633774**

